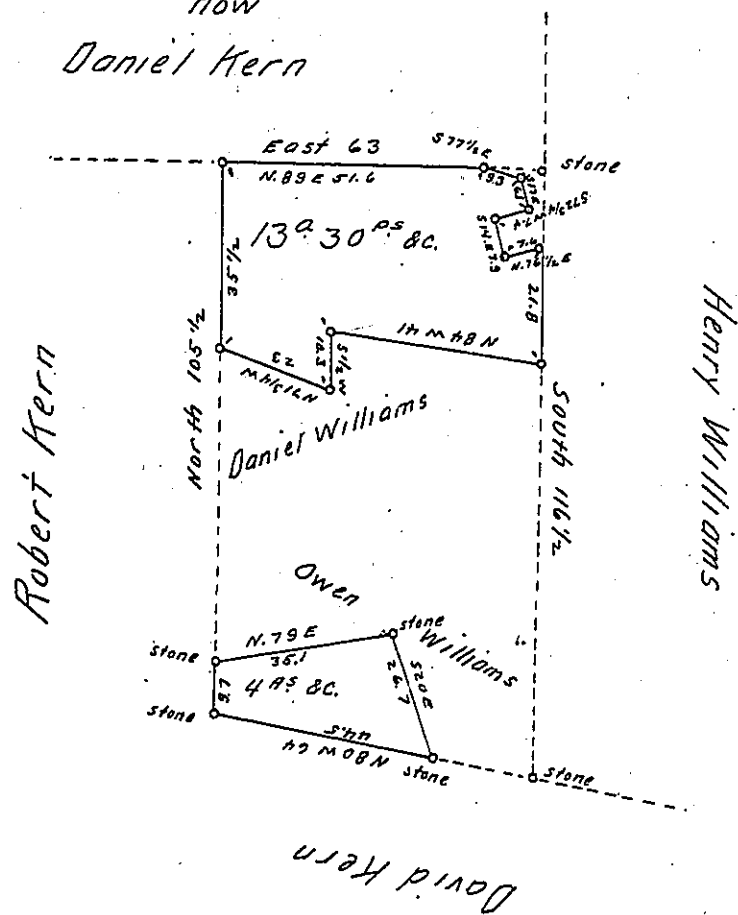


Late  
Frederick Kern  
now  
Daniel Kern



Draft of a tract of land situated in Heidelberg (now Washington) township in the County of Lehigh containing 17 Acres 30 perches and allowance of six per cent for roads &c. surveyed for Daniel Kern David Kern Lewis Hanke and Jeremiah Krause the 28<sup>th</sup> day of July 1870. being a part of a larger tract of 41 Acres 37 P<sup>s</sup> & Allowance originally surveyed in pursuance of An Application N<sup>o</sup> 1863. dated the 2<sup>d</sup> day of September 1766. to Frederick Kern.

To J. M. Campbell Esqr.                      Geo. Blank C.S.  
Surveyor General

IN TESTIMONY that the above is a copy of the original remaining on file in the Department of Internal Affairs of Pennsylvania, made conformably to an Act of Assembly approved the 16th day of February, 1833, I have hereunto set my Hand and caused the Seal of said Department to be affixed at Harrisburg, this twenty seventh day of June 1905.

*Isaac P. Brown*  
Secretary of Internal Affairs.